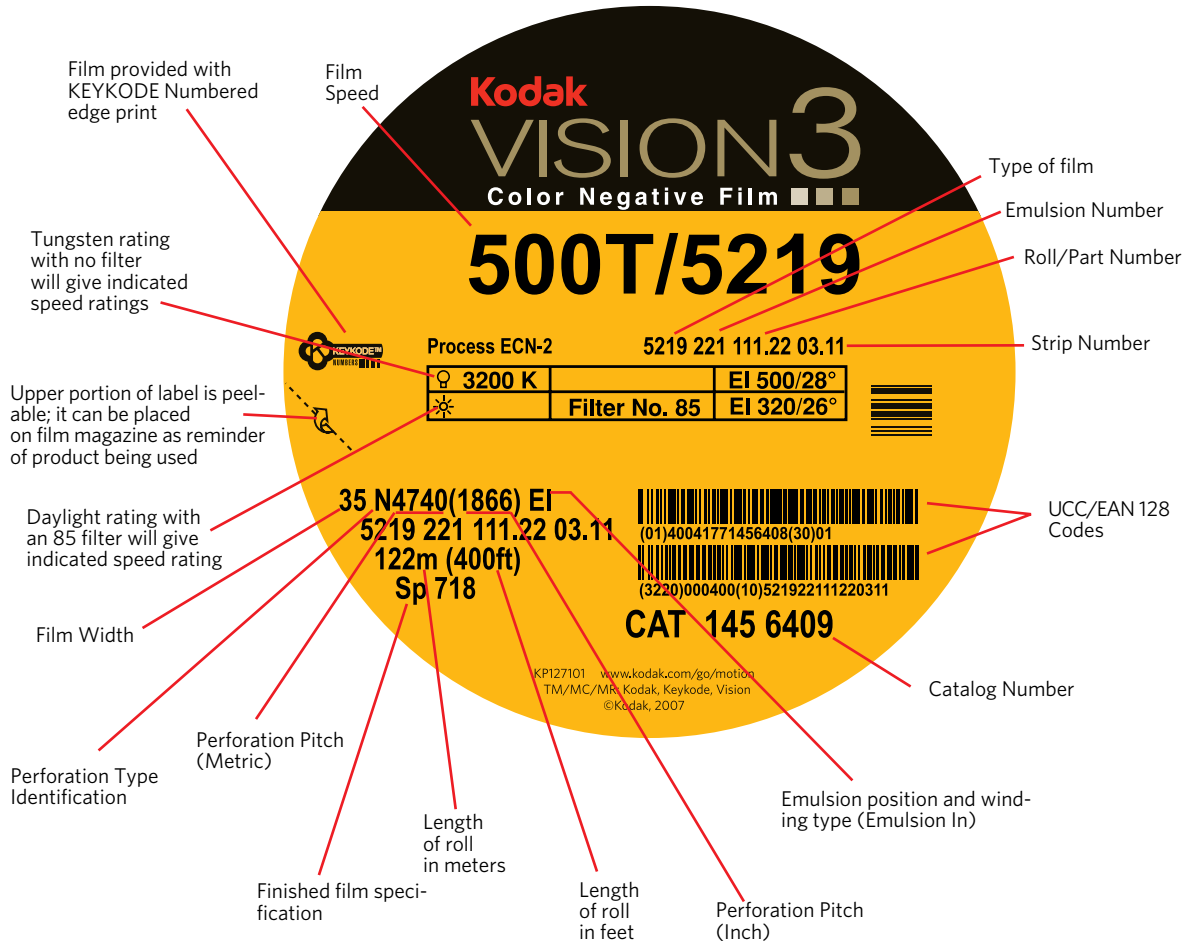


HOW TO READ A KODAK FILM CAN LABEL.

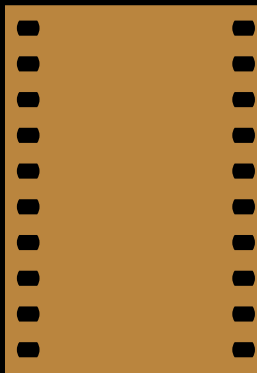


FILM SIZES

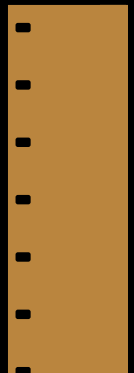
65 mm



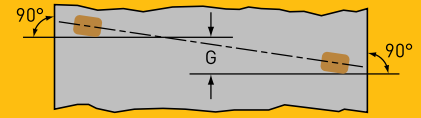
35 mm



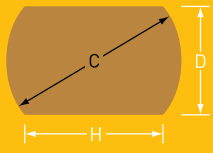
16 mm



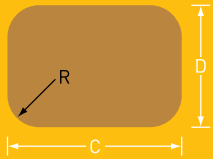
PERFORATIONS



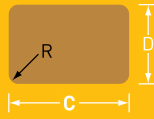
"G"—is a measure of how straight the perforations are in line with each other.



Bell & Howell - "Negative" perforation used on most camera negative films. Evolved from early round perforations.



Kodak Standard - "Positive" perforation. Large size, rounded corners are used for extra strength. Used primarily for release prints.



16 mm perforations - are the same size and shape for all film types.

Dimension	PERFORATION TYPE					
	(N) Bell & Howell		(P) Kodak Standard		16 Millimeter	
	Inches	mm	Inches	mm	Inches	mm
C	0.110	2.794	0.110	2.794	0.072	1.829
D	0.073	1.854	0.078	1.981	0.050	1.270
G	0.001	0.03	0.001	0.03	0.001	0.250
H	0.082	2.08				
R			0.020	0.510	0.010	0.250

SPOOLS



S-83

KODAK Spool for AATON A-MINIMA Camera



R-90—16 mm

3.615-in. (92 mm) OD metal camera spool. Square hole with single keyway in both flanges. Center hole aligned on both flanges. For 100-ft. (30 m) 16 mm film loads.

S-83—35 mm

3.62-in. (93 mm) OD metal camera spool. Square hole with single keyway in both flanges. Center hole aligned on both flanges. For 100- and 150-ft. (30 m and 46 m) film loads.

KODAK Spool for AATON A-MINIMA Camera—16 mm

Specially-designed flexible flange 200 ft (61 m) plastic daylight spool. B-wind, emulsion out. Specific to the A-MINIMA Camera consisting of 2 flexible flanges and a non-keyed 2-inch core. Can be loaded in subdued light without edge fogging.

CORES



Type P Core—65 mm

3-in. (76 mm) OD plastic core. Used for various film lengths and codes.



Type Y and EE Cores—35 mm

3-in. (76 mm) OD plastic core. Used for various film lengths and codes.



Type U Core—35 mm

2-in. (51 mm) OD plastic core. Used with various film lengths and codes.



Type T Core—16 mm

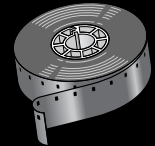
2-in. (51 mm) OD, 1-in. (25.4 mm) ID plastic core. Used with most 16 mm.



Type Z Core—16 mm

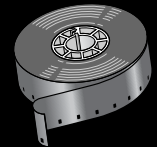
3-in. (76 mm) OD plastic core. Used with camera and print films in rolls longer than 400 ft. (122 m)

WINDINGS



16 mm Winding A

Emulsion side in. Used for contact printing, in some sound recorders and A-MINIMA cameras.



16 mm Winding B

Emulsion side in. Used for camera film, Super 16 camera film, optical prints, and on bidirectional printers.